



**Smart, Scalable & Secure  
Real-time Student  
Transport Platform  
For Modern Universities**

---

**Contact Info:**

[contact@studentpasscard.com](mailto:contact@studentpasscard.com)

Dear University Technology Leadership,

We're proud to introduce **Student Passcard**, an advanced, Azure-based transport management solution tailored for universities and student communities. Built on a **scalable Blazor Server architecture running in Azure Container Apps Premium**, it offers unmatched reliability, security, and actionable insight into campus mobility.



## Enterprise-grade Infrastructure & Autoscaling

**Student Passcard** is architected to support institutions of any size with a powerful, cloud-optimized infrastructure designed for reliability, speed, and effortless scalability. The platform can handle over **10,000 routes** and more than **100,000 active students**, making it ideal for large-scale deployments across multiple campuses.

Built on a **fully automated autoscaling system**, Student Passcard continuously adjusts resources in real time based on load, connection count, and performance metrics. The **Azure Load Balancer** efficiently distributes traffic across active containers, ensuring consistent performance and uninterrupted service even during high-demand periods.

Optimized for **real-time QR scanning**, the system enables student verification at gates or on buses in under **100**

**milliseconds**, maintaining smooth operations without bottlenecks. With **Azure SignalR Premium**, Student Passcard seamlessly manages over **1 million messages per day** with global availability and reliability.

Its **infrastructure can scale from zero to over 100 containers within seconds**, responding instantly to fluctuations in live demand. Designed for **multi-campus environments**, the platform offers full support for tenants, roles, and permissions, giving institutions granular control and flexibility in managing access and operations.

These capabilities ensure that Student Passcard performs flawlessly during **registration surges, peak hours, or mass check-ins**, delivering a consistently high-quality experience without compromising performance or stability.

Platform can handle  
**10,000+**  
routes

and  
**100,000+**  
Active students



## Privacy, Encryption & Compliance

Student Passcard places **student privacy and data protection** at the core:

**End-to-end encryption** of all QR pass metadata and event logs.

**AES-256 encryption** at rest (Azure Storage & Cosmos DB).

**TLS 1.2+ encryption in transit** with zero trust perimeter on all APIs.

**GDPR & FERPA compliant**, with audit trails and user access logs.

## Wallet-Ready Secure QR Passes

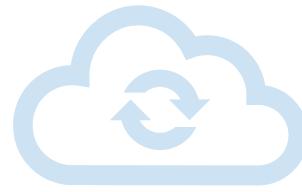
Issue daily, encrypted **student QR passes** that are:

- Fully integrated with **Apple Wallet and Google Wallet**.
- Geofence-aware and timestamped.
- Securely used for check-in/check out at campus gates, shuttles, and special events.

The passes eliminate forgery risks and support both **manual and automated scanning devices**, including tablets or mobile-based kiosks.



## Automatic Daily Sync with Campus Systems



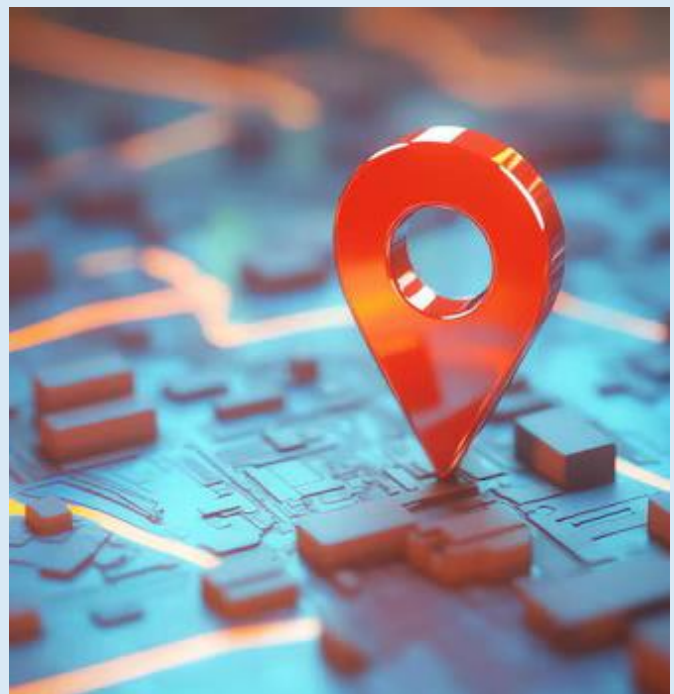
**Student Passcard** integrates seamlessly with your institution's internal data sources including **Student Information Systems (SIS)**, **transit rosters**, **housing records**, and **class schedules** to ensure that all information stays accurate and up to date. The platform performs **automated daily synchronization** of student, stop, and schedule data, removing the need for manual uploads or reliance on spreadsheets.

By connecting directly to your existing systems, Student Passcard keeps all **route and pass data** current without requiring ongoing IT intervention. This continuous synchronization ensures that administrators, staff, and students always have access to the latest information, enabling smoother operations and more reliable campus mobility management.

## Smart Stops & Routing Engine

At the heart of Student Passcard is its **advanced Stops engine**, designed for real-world urban and campus environments:

- **Polygon-based stop zones** with adjustable radius (not just point coordinates).
- Store **custom metadata per stop**: student assignments, geofences, pickup direction, priority, time windows.
- Optimize pickups using **route estimation**, directional mapping, and stop-to-stop sequencing logic.
- Compatible with **Google, Apple, and OpenStreetMap**, plus external GPS devices and APIs (e.g., Samsara tablets).



# Actionable Admin Dashboard & Analytics

University staff benefit from a **powerful admin interface** and real-time analytics suite:



## Monitor Operations:

- Live view of active runs, GPS trails, and check-in logs.
- Track how often each route runs and how long each takes.

## Track Ridership:

- Compare **assigned vs actual drop-offs**.
- Identify missing riders, no-shows, or pattern gaps.

## Detect Issues Early:

- Spot short or overly long runs, underutilized routes, or zero-ridership stops.
- Driver feedback and incident reporting flows into the dashboard in real time.

## Optimize Scheduling:

- Analyze usage trends to reassign stops, merge runs, or stagger trips to reduce congestion.

## For Drivers:

- **Mobile driver dashboard** with live route status, active students, stop list, and alerts.
- **One-tap incident reporting:**
  - “Missed pickup”
  - “Traffic delay”
  - “Bus issue”
- Driver messages are surfaced instantly to admin dashboards.

# Role-Based Access Overview

Role	Scope of Access	Permission Summary
Driver	Assigned route(s) only	Can scan QR codes, view student boarding status, submit incident reports.
Parent	Assigned children only	Real-time view of child's location and scan history (pick-up / dropoff).
Student	Self only	Access their own route info, scan logs, and profile
Basic User	Scoped per assignment	Minimal access (read-only or restricted modules), managed via custom role policies.
SchoolAdmin	Selected school(s) only	Full control over: Students, Stops, Routes, Transport Logs, Trip Reports for their school(s).
OrgAdmin	Entire organization	Superuser access: can manage <b>ALL</b> schools, buses, drivers, routes, QR passes, logs, users, roles, and imports/exports.

## Custom Integration-Ready

Student Passcard is **highly extensible** to fit your existing ecosystem:

### Map providers:

Google, Apple, OpenStreetMap

### Analytics Engines:

OpenAI, Microsoft, Power BI, custom reporting layers

### GPS providers:

Samsara, tablets, mobile apps, 3rd-party APIs

### Modular Architecture:

allows plug-and-play integration with Reporting engines, Payment systems, Emergency alert networks, Campus safety tools

All integrations are API-first and **customizable per campus deployment**.

# Summary of Core Benefits of Student Passcard

Feature	Benefit
Scales to 100,000+ students	Handles peak loads without downtime
Autoscaling & Load Balancing	Seamless performance during high activity
Real-time QR check-ins	100ms scan + verify under any conditions
Secure Wallet QR Passes	Fast, encrypted check-ins for students
Automated Daily Sync	Always up-to-date with student and route data
Smart Stops Architecture	Accurate geofencing and optimized routing
Real-Time Dashboard	Instant visibility and actionable insights
Driver Feedback & Alerts	Live issue reporting from the field
University-Grade Customizability	Compatible with your tools, systems, and maps

If you're seeking a **scalable, secure, and intelligent transport system** for student mobility **Student Passcard** is ready.

Feel free to reach out for a live demo, performance simulation, or architecture deep dive.

Best regards,  
Founder & Technical Architect  
**Student Passcard**